



## *St. Michael Catholic Church*

574 Eighth Street  
Calhan, CO 80808  
(Mail: P.O. Box 199  
Calhan, CO 80808)  
Office: (719) 347-2290  
<https://saintmichaelcalhan.diocs.org/>

---

November 23, 2022

Dear Brothers and Sisters in Christ,

With the recent announcement of the resumption of Holy Communion offered under both kinds or species (e.g., the resumption of Communion of the Precious Blood) on Sunday, November 27, 2022, the First Sunday of Advent, I have found it necessary to publish the attached addendum to the parish's existing, published Handbook for Extraordinary Ministers of Holy Communion .

May God bless you abundantly in this matter, as we remain at the service of Our Lord and His People.

Respectfully  
Yours in Christ,

// SIGNED //

Fr. R.G. Newbury Jr.  
Parochial Administrator

3 Attachments:

1. Procedures for the Resumption of the Distribution of Precious Blood at the St. Michael Sunday Masses
2. Credence table set-up photos
3. Diagram of EMHC positions



## ATTACHMENT 1

Amended Policies and Procedures regarding the resumption of the distribution of the Precious Blood effective Sunday, November 27, 2022, are as follows:

- \*\* Pictures regarding how the sacristans are asked to up the credence table and the positions of the EMHCs with the Body and Precious Blood are attached.
- After the Priest has received both species of Holy Communion, the EMHCs may enter into the Sanctuary and go to their designated places.
- The EMHCs will be positioned next to the Altar Servers (lectern side).
- The Priest presider will (after he has received of both Communion species) first give Holy Communion via a Consecrated Host and then the Presider's chalice of Precious Blood to the Deacon or Acolyte (if present) and then he will begin distributing Holy Communion (Consecrated Hosts first) to the Altar Servers, then to the EMHC's.
- Once the Priest Presider finishes distributing Holy Communion to the Altar Servers, the servers will then move back to their bench area, and the EMHCs will then receive the Precious Blood.
- Once all of the EMHCs have received Holy Communion under both species, the Priest will then hand the paten containing the Consecrated Hosts to the designated EMHC and then, hand the chalices of the Precious Blood to the designated EMHCs, along with a purificator to use during distribution to the assembled Catholic faithful.
- ***EMHCs (like altar servers) are not permitted to take Sacred Vessels directly from the altar or place them directly back on the altar. They must be handed to them by a member of the clergy AND handed by them back to the clergy.***
- The Priest Presider, the Deacon carrying a chalice of the Precious Blood (if present) and the EMHCs will take their designated places to distribute Holy Communion to the gathered Catholic faithful.
- As with the distribution of the Sacred Body, the Deacon or EMHC shall say "*The Blood of Christ*" before handing the chalice to the communicant. After each communicant has consumed, the Deacon or EMHC are to use the purificator to cleanse both the inside and outside spots of the chalice edge that the communicant just used.

The purificator should not be fully opened, however, rotated for a clean spot, after each use, until the distribution of Holy Communion has ended.

Additionally, if the communicant inadvertently does not say "*Amen*" following the statement "*The Body of Christ*", the EMHC is asked to do so.



- In the event of a spill of the Precious Blood, the Deacon or EMHC shall place the purificator over the spill and stand near, but not directly over, the spill in order to prevent someone from stepping on the spot where the spill occurred.
  - They are to go to the credence table (or communicate to an altar server) to retrieve an extra, unused purificator positioned on the credence table for use.
  - At the end of the distribution of Holy Communion, the EMHC is asked to inform the Deacon or Priest of the Precious Blood spillage.
  - The Priest Presider (or Deacon, if present and so asked) will cleanse the area of the spillage.
- In the event of a chalice of the Precious Blood becoming empty, the Deacon or EMHC shall cover the top of the chalice of the Precious Blood with the purificator and his/her hand.
- The minister will then return to the sanctuary area (between the altar and credence table) with the covered chalice and await the Priest or Deacon to return to the altar and hand the chalice to one of them for purification.
  - In short, there is no need for anyone to remain at their designated Communion position, if they have no further Precious Blood to distribute. Doing so, tends to create undue confusion to communicants.
- At the end of the Distribution of Holy Communion, the EMHCs shall bring their Sacred Vessels back to the altar area and hand them to the Priest or Deacon. **Please do not simply place the Sacred Vessels on the altar.**
- All of the EMHCs are asked to exit the Sanctuary area together and bow to the Altar (at the foot of the sanctuary) before returning to their seats.
- Any remaining Precious Blood is consumed by the Priest and/or the Deacon at the altar.
  - The EMHCs may be asked by the Priest Presider to help consume any remaining abundance of Precious Blood still remaining in their chalice/s, if/as needed.
- The Priest or Deacon will place the remaining Consecrated Hosts into the ciborium and return it back into the Tabernacle.



- The Priest Presider, Deacon or Acolyte will purify all of the Communion vessels at the altar and hand them to the Altar Servers to be returned to the credence table.
- Altar servers are **not permitted** to handle any sacred vessels (that were previously used for the distribution of Holy Communion), if they have not yet been purified.

#### SPECIAL NOTES:

- Any pyx's that are to be brought to the homebound after Mass shall be placed on the credence table before the Mass and brought up to the Altar during the preparation of the gifts (with the suitable number of unconsecrated hosts pre-placed in them by the Sacristan).
- The St. Michael Catholic Church does not permit self-intinction and/or Communion by intinction from the priest at this time.
- While the EMHCs with the patens of the Consecrated Hosts may bring Holy Communion to those faithful seated in the Worship Space, who are unable to come forward themselves to receive Holy Communion, the Deacon or EMHC with the chalice of Precious Blood are **not permitted** to bring the chalice of Precious Blood away from the sanctuary area and to a pew or seat for any reason. This act has been explicitly forbidden by the diocese's bishop.
- It is also forbidden to pour the Precious Blood from one chalice to another.
- If for some reason, the sacred vessels cannot be purified during the Mass, all of the vessels are to be covered with a single cloth covering, and the vessels will be purified immediately by the Priest, Deacon or Acolyte immediately after the Mass.
- To clarify: NO Altar Servers or EMHCs are permitted behind the altar during the Mass please.



## ATTACHMENT 2

### RESUMPTION OF HOLY COMMUNION DISTRIBUTION OF THE PRECIOUS BLOOD

## SACRISTANS

**Effective November 27, 2022 (First Sunday of Advent)**

**Sabbath Mass Sacristans are asked to please set-up  
the Credence Table as depicted in the below picture.  
(FYI: The altar corporal is to be placed on the Priest's chalice as normal)**



EMHCs two chalices  
(filled approximately one-third to half full),  
with two folded, purificators over them.

(Current as of: November 23, 2022)

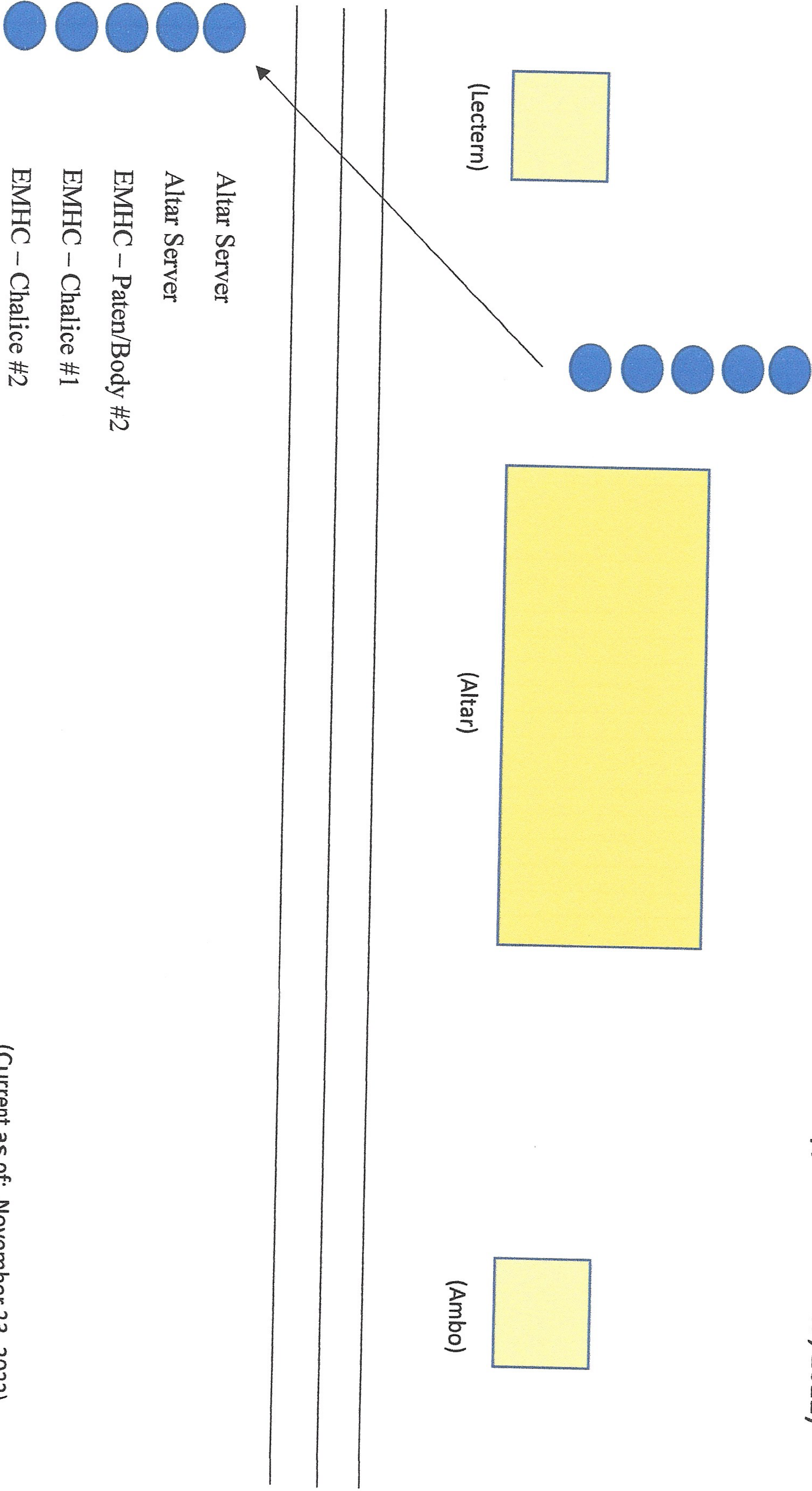


**ATTACHMENT 3**

**St. Michael Catholic Church**

**Diagram - Extraordinary Ministers of Holy Communion**

(in preparation for the resumption of the Distribution of the Precious Blood on Sunday, November 27, 2022)



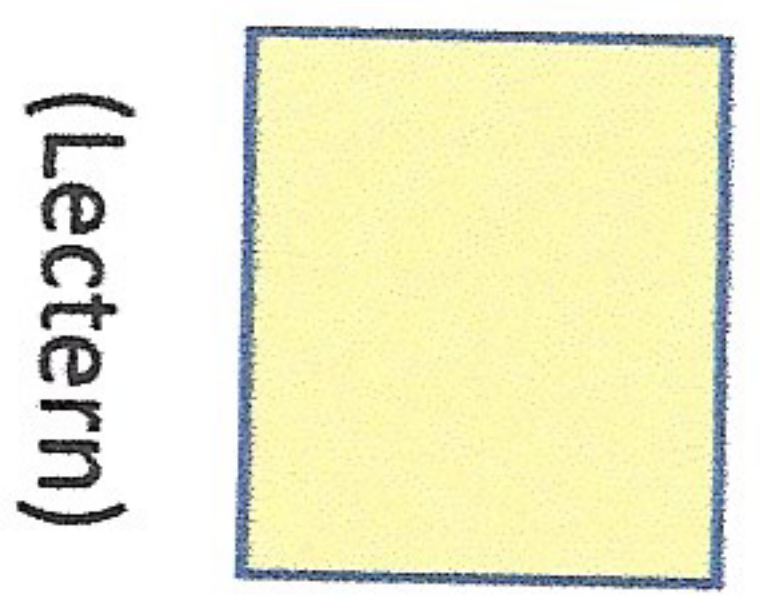
(Current as of: November 23, 2022)



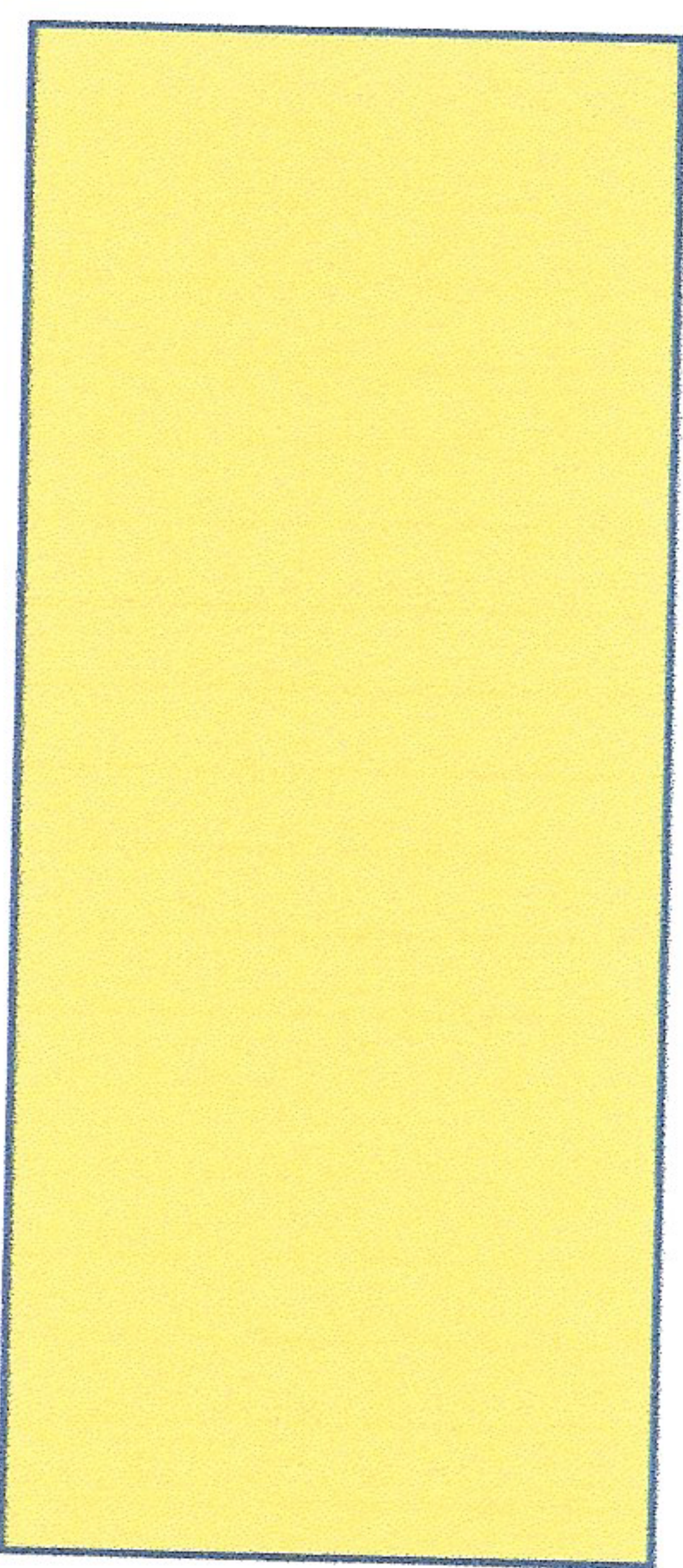
St. Michael Catholic Church

Diagram - Ordinary and Extraordinary Ministers of Holy Communion

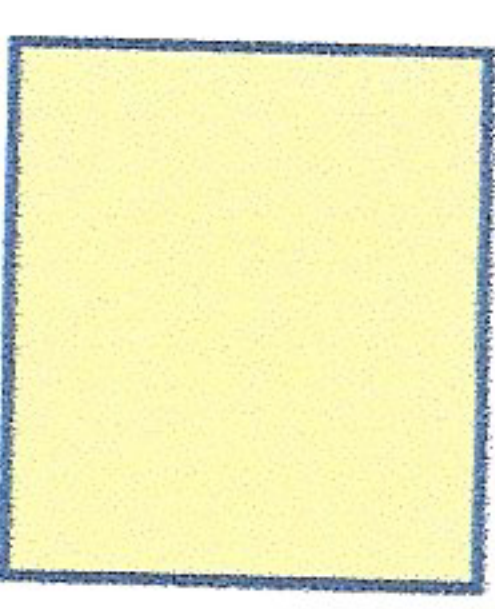
(in preparation for the resumption of the Distribution of the Precious Blood on Sunday, November 27, 2022)



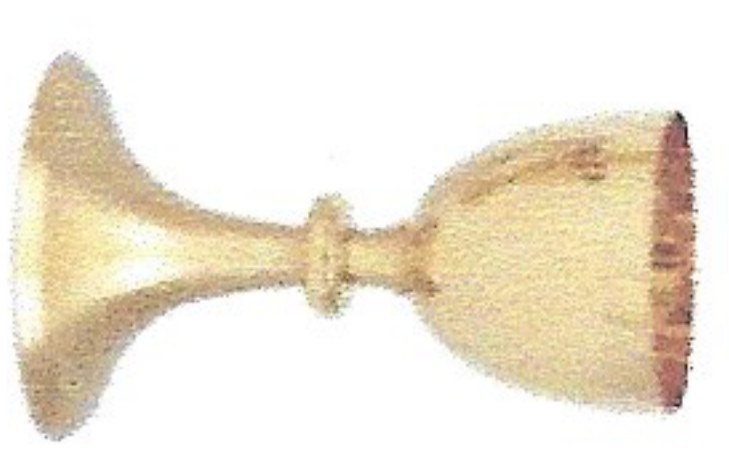
(Lectern)



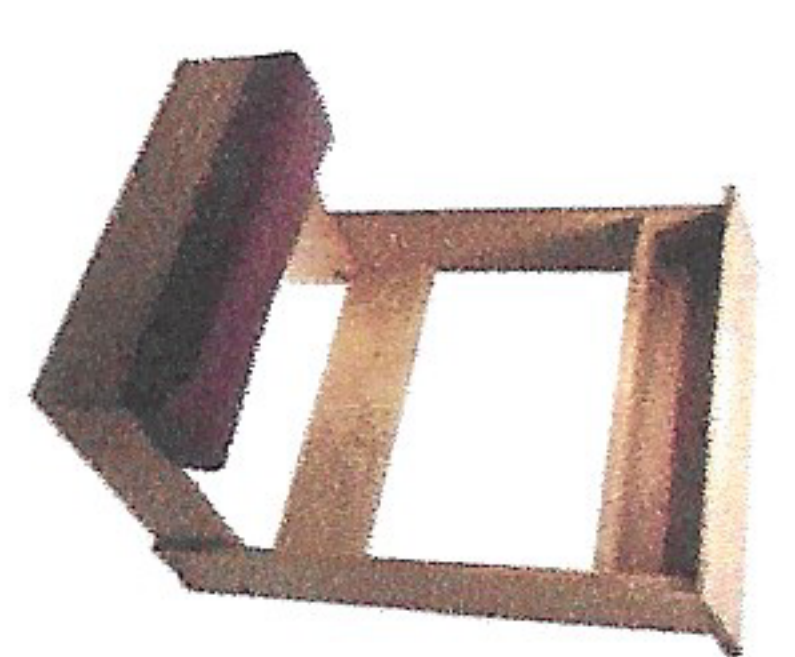
(Altar)



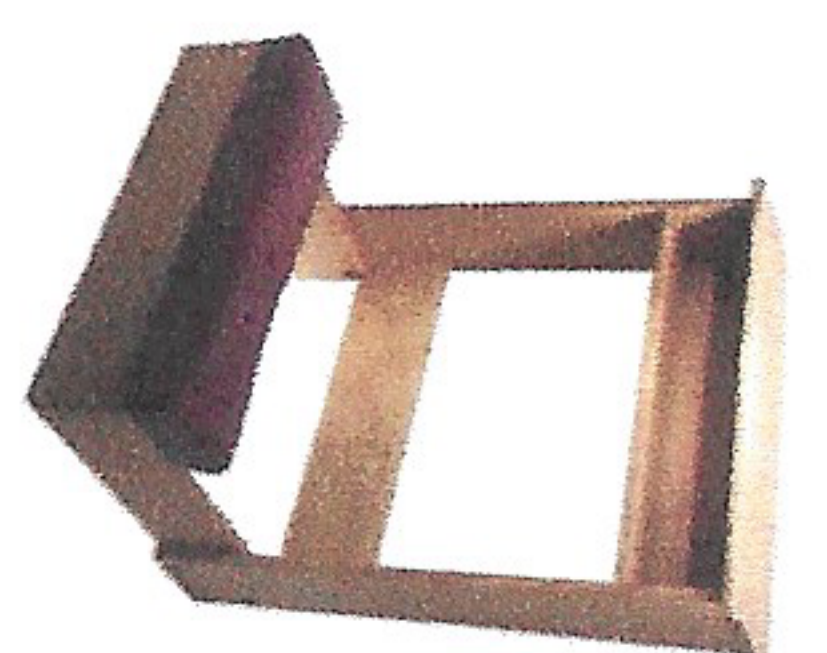
(Ambo)



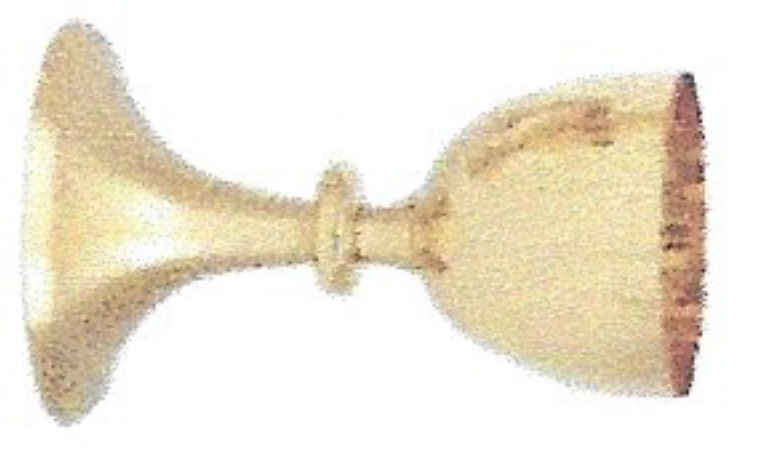
EMHC/Chalice #2



EMHC/Body #2



Priest/Body #1



Deacon-EMHC/Chalice #1